

AUDITION INFORMATION MEETING

10/6/23



TONY AWARD PERFORMANCE



RESOURCES & MATERIALS

unitheatrearts.org

[ACTING PATHWAY](#) [TECHNICAL PATHWAY](#) [PRODUCTIONS](#) [AWARDS](#) [CAPPIES](#) [UNI COMEDY SPORTZ](#) [THESPIANS](#) [LINKS & MORE...](#)

[GALLERY](#) [PARENT INFORMATION](#)



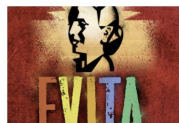
[HTTPS://UNITHEATREARTS.ORG/](https://unitheatrearts.org/)

UNI THEATRE ARTS NEWS



UHS Arts Core Theatre Artists
of the Month

OCTOBER 9, 2023



Spring Musical Information

OCTOBER 2, 2023



Production Meeting

SEPTEMBER 27, 2023



UNI THEATRE ARTS PRESENTS



MARCH 7TH-9TH AND MARCH 14TH-16TH



IS THE SHOW RIGHT FOR YOU?

YOUR SOUL

YOUR FAMILY

YOUR ACADEMICS

EVITA

YOUR OTHER LOVES & COMMITMENTS



OUR COMPANY BREAKDOWN

STAGE MANAGEMENT TEAM

STUDENT DESIGNERS

ORCHESTRA

RUNNING CREW

ACTORS

HOUSE CREW

THE AUDITION TIMELINE

SEPTEMBER 29TH

Research the Show
Think About Audition Material

OCTOBER 6TH

Interest Meeting
Ask Questions

WEEK TO PREPARE

OCTOBER 16TH AND 17TH

Virtual Auditions for Singing & Technicians
Live Dance Audition for Actors

REHEARSAL SCHEDULE OVERVIEW

MONDAY, WEDNESDAY & THURSDAY @ 6-10 HOURS A WEEK

MOST SATURDAYS & STUDENT HOLIDAYS @ 3-10 HOURS

6 NIGHTS OF SHOW

3 STRIKE NIGHTS

3 AWARD CEREMONIES

UPHOLDING YOUR PROMISE



COMPANY CONTRACT

I _____ understand the terms of enrollment for 9th period Advanced Theatre Production. Once cast I agree to the following:

General Policies

1. I have provided legible and accurate information on my audition form and understand the importance of checking my email regularly throughout the production process.
2. I understand the importance of upholding my commitment to the Theatre Department and, thus if I drop a show offer cost I understand that my decision may affect my casting in future roles in University High School Theatre Department's productions.
3. I agree and will support any choices in *double casting, design teams or understudies*, as I trust the expertise of the directorial staff.
4. My parents and I will attend the **PARENT & COMPANY MEETING ON TUESDAY JANUARY 10TH AFTER REHEARSAL** to get the information that is necessary to have a successful production.
5. I will keep my GPA at or above a 2.0 at all times throughout the production process or understand that I will not be able to fully participate in the fall play. I understand I will have a poor grade in ATP as a result of suspended participation.
6. I will follow the *Trojan Code of Conduct* at all times or understand I may be removed from the Company.
7. After signing my acceptance of casting, I will handle my responsibility to the production company with a grateful attitude, hard-working nature and energetic spirit.

Fiscal Policies

8. I understand that, in accordance with ACLU Laws, there is no financial requirement for my participation in a theatrical production; however, I will donate, sell program advertisements or get a **COMPANIE SPONSOR ON DONATE 2500 PRIOR TO JANUARY 21ST** to make the production possible.
9. On **FEBRUARY 11TH** I will begin bringing my character attire, necessary underclothes, hair supplies, make-up kit & character shoes to every rehearsal.

Rehearsal Etiquette & Attendance

11. I agree to miss **NO MORE THAN 10 REHEARSALS** for the modified number Miss Betger and Administration have assigned due to pandemic policies throughout the rehearsal process, or I will either be dropped from the show AND/OR will accept a failing grade in ATP.
12. I will attend all rehearsals for my character, or I will communicate via email to Miss Betger: **48 hours in advance or no later than 8am** the day of.
13. I will show professional behavioral rehearsal: punctual, prepared and positive.
14. I will always have my pencil, water, rehearsal attire, script and score at rehearsal.
15. I will accept penalties to my grade as consequences of my actions on and off stage.

Student Signature _____

Approval for 9th period enrollment & contract terms _____

SCHOLARSHIP OR DONATION

10 OR FEWER REHEARSALS MISSED

UNDERCLOTHES, HAIR & MAKE-UP SUPPLIES

ADVANCED THEATRE PRODUCTION

CAPPIES & MACYS



CREW

WHAT SUITS YOU

DESIGNER:

You love having ideas, making choices.

You work well alone and are able to meet deadlines.

You are a mature and experienced leader able to enroll in 6th period.

You can teach others to understand and implement your design.

RUNNING CREW:

You love working with your hands: tinkering, solving, creating.

You follow directions well.

You enjoy collaborating on the work of theatre and developing your craft.

HOUSE CREW:

You love being involved but aren't looking for a huge commitment.

You are happy being the face of Uni Theatre Arts.

POSITIONS

THEATRE SEMINAR LEADERSHIP

- Stage Management Team (3)
- Designers (9)

RUNNING CREW: DECK

- Props Master (1)
- Microphone Technicians (2)
- Fly Rail Operator (2)
- Dressers (2)
- Hair & MakeUp Artists (2)
- Props, Scenery & FX Crew (2)

RUNNING CREW: TECH

- Sound Board Operator (1)
- Light Board Operator (1)
- Projection Operator (1)
- Caption Operator (1)
- Spotlight Operator (2)

HOUSE CREW

- House Manager
- Box Office Manager
- Merchandise
- DHH Captioning
- Parent & Cappie Support

DESIGNER CONCEPT PITCH



MONDAY OCTOBER 23rd

Google Form Due @ 8:30am

Narrated slide deck

Adhere to Miss Bettger's Essential Beauty & Vision

Include a Concept Pitch

Include 1 sample design

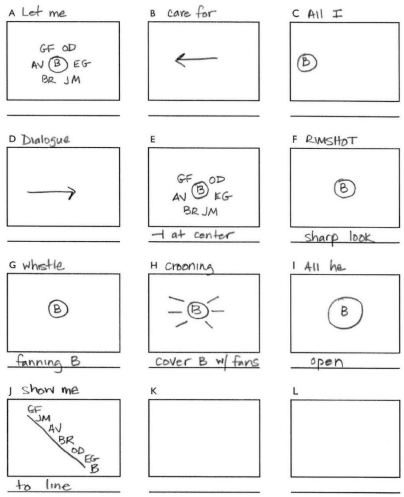
Discuss WHAT excites you about this production value in EVITA

STAGE MANAGEMENT PITCH

90. 1] KING LEAR 99
 And from some knowledge and assurance offer
 This office to you.
Genl. I will talk further with you.
Ant. No, do not.
 For confirmation that I am much more
 Than my out-wail, open this purse, and take
 What it contains. If you shall see Cordelia,—
 As fear not but you shall—show her this ring,
 And she will tell you who that fellow is.
 That yet you do not know. Fix on this storm!
 I will go seek the King.
Genl. Give me your hand. Have you no more to say?
Ant. Few words, but, to effect, more than all yet;
 That, when we have found the King, in which your
 pain
 That way, I'll this, he that first lights on him
 Holla the other. *[Exeunt severally.]* 55

SCENE II.—*[Another part of the Heath.]* Storm still.
Enter LEAR and FOOL.
Lear. Blow, winds, and crack your cheeks! rage! blow!
 You cataracts and hurricanes, spout
 Till you have drench'd our steeps, drown'd the cocks!
 You sulph'rous and thought-executing fires,
 You nine-convulsed and oak-shaking thunder,
 Singe my white head! And thou, all-shaking thunder,
 Strike flat the thick rotundity o' th' world!
*Crack Nature's moulds, all serene! spill at once
 That makes ingrateful man!*
Fool. O Nuncle, court holy-water in a dry house is better
 than this rain-water out o' doors. Good Nuncle, in,
 ask thy daughters blessing; here's a night pities
 neither wise men nor Fools.
Lear. Rumble thy bellyful! Spit, fire! spout, rain!
 Nor rain, wind, thunder, fire, are my daughters:
 I tax you not, you elements, with unkindness:
 I never gave you kingdom, call'd you children,
 You owe me no subscription: then let fall

Standby Sound C5
 Sound C5 GO [Thunder]
 Standby LX C5 10-14 and Sound C5 4-6
 LX Q 10 GO [Dim scene change]
 When the stage is clear
 LX Q 11 GO [Heath state - dim]
 LX Q 12 GO [Lightning flash]
 Follow on Sound C4 GO [Thunder
 rumble]
 LX Q 13 GO [Lightning flash]
 Follow on Sound C5 GO [Thunder
 crack]
 LX Q 14 GO [Lightning flash]
 Follow on Sound C6 GO [Thunder
 rumble]



MONDAY OCTOBER 23rd
 Google Form Due @ 8:30am
 Narrated slide deck

Identify Goals for the Company

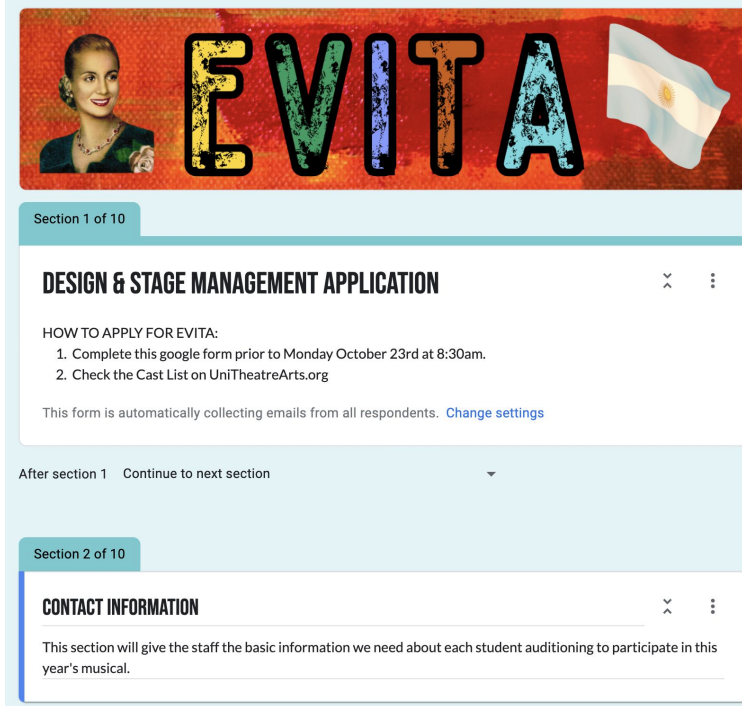
How your SM Team makes those actionable

Include 1 sample prompt book page

Include 1 sample scene change diagram

Discuss WHAT excites you about EVITA

DESIGNER APPLICATION



Section 1 of 10

DESIGN & STAGE MANAGEMENT APPLICATION

HOW TO APPLY FOR EVITA:

1. Complete this google form prior to Monday October 23rd at 8:30am.
2. Check the Cast List on UniTheatreArts.org

This form is automatically collecting emails from all respondents. [Change settings](#)

After section 1 Continue to next section

Section 2 of 10

CONTACT INFORMATION

This section will give the staff the basic information we need about each student auditioning to participate in this year's musical.

DISCUSS THE SHOW WITH YOUR FAMILY

FILL OUT THE GOOGLE FORM

PREPARE A 60 sec TO 5 min PITCH
CONCEPT, SAMPLE & PASSION

OCTOBER 23RD

UPLOAD TO FORM BEFORE 8:30AM



PERFORMERS

THE ORCHESTRA

Woodwind 1 (Flute, Alto Flute, Piccolo)

Woodwind 2 (Clarinet, Bass Clarinet, Tenor Sax)

Horn

Trumpet 1

Trumpet 2 (dbl. Flugelhorn)

Trombone

Guitar (Electric, Acoustic, Spanish, 12-String)

Drums

Percussion (Orchestral Bass Drum, Bass Drum, Bongos, Congas, Cymbal, Glockenspiel, Gran Cassa, Guiro, Marimba, Metal Cabaca, Military Snare, Small Woodblocks, Snare, Tambourine, Tam-tam, Temple Blocks, Timbales, Timpani, Triangle, Whistle, Xylophone)

Keyboard 1

Keyboard 2

Keyboard 3/Accordion

Violin 1

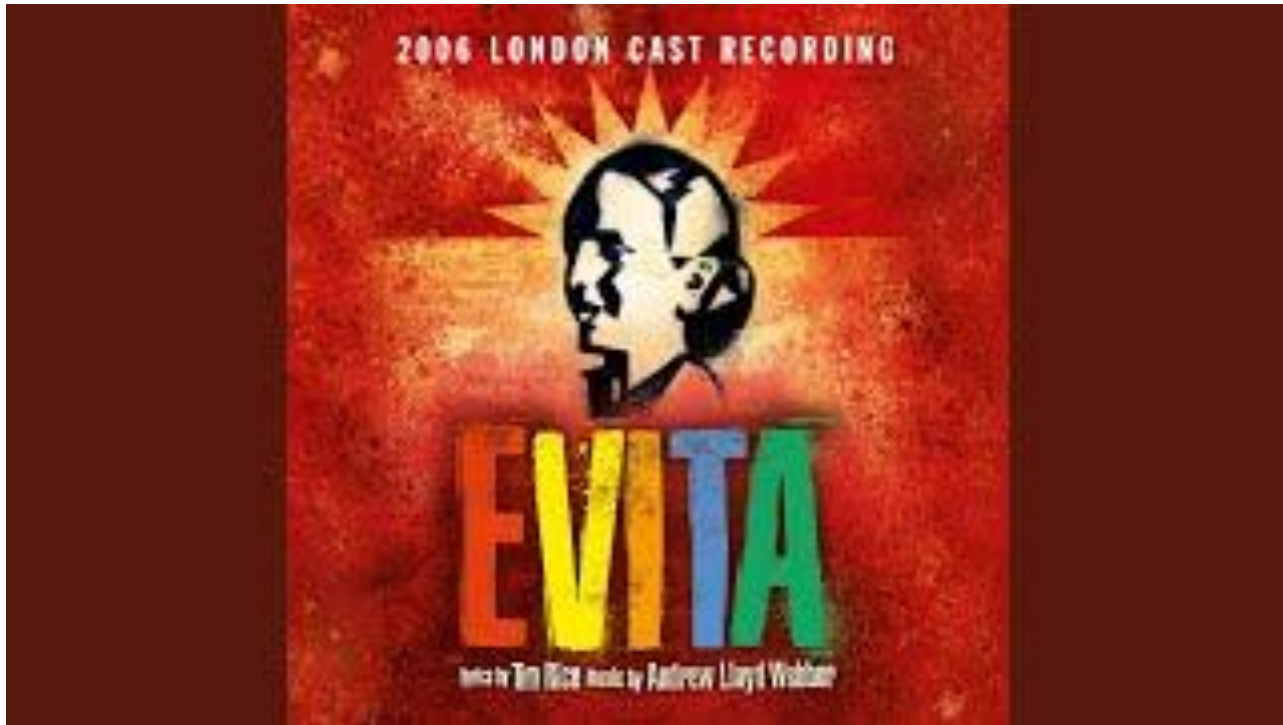
Violin 2&3

Viola

Cello

Bass (Electric, Acoustic, C Bass)

THE ART OF THE POSSIBLE.....



THE CAST

PRINCIPALS

Eva Peron
Perone
Che

FEATURED

Peron's Mistress
Magaldi

ENSEMBLE

Men, Women and Children of Argentina

ADDITIONAL REQUIREMENTS

Eva—E (below middle C) to a top F, strong mixed belt

Che—Rock Tenor

Peron—Baritone

Magaldi—Baritone

Mistress—Light contemporary mix to E

Ensemble—All ranges to a high standard

Dancers—All must be able to sing

ACTOR AUDITION



2024 MUSICAL- ACTOR AUDITION FORM

HOW TO AUDITION FOR EVITA:

1. Complete this google form prior to Monday October 16th at 2pm.
2. Come to the live dance audition on Tuesday the 17th at 5:30pm.

ranaebettger@iusd.org [Switch account](#)



The name, email, and photo associated with your Google account will be recorded when you upload files and submit this form

* Indicates required question

DISCUSS THE SHOW WITH YOUR FAMILY

FILL OUT THE GOOGLE FORM

PREPARE A 32 BAR SELECTION

NOT FROM EVITA OR URINETOWN

OCTOBER 16TH

UPLOAD TO FORM BEFORE 2PM

VOCAL AUDITION

Please sing 32 measures in the style of the show.
You may use piano accompaniment or a track. No acapella singing.

- **EVA – E (BELOW MIDDLE C) TO A TOP G - STRONG MIXED BELT**
 - I Wish I Could Forget You - *Passion*
 - Kiss of the Spider Woman - *Kiss of the Spider Woman*
 - Nobody's Side - *Chess*
- **CHE – ROCK TENOR (LOW A TO HIGH B, FALSETTO TO HIGH F)**
 - Gethsemane - *Jesus Christ Superstar*
 - Pity the Child - *Chess*
 - Radames' Letter - *Aida*
- **PERON – BARITONE (TO HIGH F)**
 - Anthem - *Chess*
 - Sunset Boulevard - *Sunset Boulevard*
 - Where I Want to Be - *Chess*
- **MAGALDI – BARITONE/TENOR (TO HIGH F)**
 - Only With You - *Nine*
 - She's A Woman - *Kiss of the Spider Woman*
 - Table With A View - *Grand Hotel*
- **PERON'S MISTRESS – A (BELOW MIDDLE C) TO A TOP E**
 - I Don't Know How To Love Him - *Jesus Christ Superstar*
 - As If We Never Said Goodbye - *Sunset Boulevard*
 - Someone Else's Story - *Chess*
- **ENSEMBLE – SOPRANO**
 - No One Knows Who I Am - *Jekyll & Hyde*
 - Simple - *Nine*
 - Phantom of the Opera - *Phantom of the Opera*
- **ENSEMBLE – ALTO**
 - Now That I've Seen Her - *Miss Saigon*
 - Make Up My Heart - *Starlight Express*
 - With One Look - *Sunset Boulevard*
- **ENSEMBLE – TENOR**
 - Heaven on Their Minds - *Jesus Christ Superstar*
 - Love Changes Everything - *Aspects of Love*
 - Anthem - *Chess*
- **ENSEMBLE – BASS**
 - Pilate's Dream - *Jesus Christ Superstar*
 - Funny - *City of Angels*
 - The Greatest Star of All - *Sunset Boulevard*

DANCE AUDITION

Spring Musical Information

OCTOBER 2, 2023 • RANAE BETTGER • UNCATEGORIZED

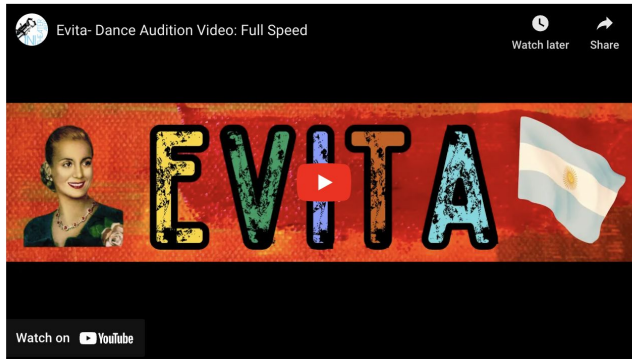


Uni Theatre Arts Spring Musical *Evita* was announced September 29th.

The Audition Information Meeting is Tuesday October 10th during OH in room 223.

Q&A will be Friday @ OH

More information about our production can be found on the [Productions](#) Tab.



VIDEOS THE UNI THEATRE ARTS WEBSITE

LEARN IT NOW- ON YOUR OWN TIME

WEAR DANCE ATTIRE- IN THE STUDIO

OCTOBER 17TH

WORKSHOP 5:30-7PM

AUDITION 7-8:30PM

THE DRAMA



NEXT STEPS

DESIGNER CONCEPT PITCH

- Applications Due Monday October 23rd by 8:30am

ACTOR AUDITION

- Virtual Song Audition- Monday October 16th @ 2pm
- Live Dance Workshop & Audition- Tuesday October 17th from 5-8:30pm
- Call Backs Monday October 23rd & Tuesday October 24th

RUNNING CREW

- Applications due Wednesday November 29th

ORCHESTRA

- Applications through Miss Manee & Mr Lowe in November

TBD- ENSEMBLE AUDITION

- Monday November 27th & Tuesday November 28th



THANKS FOR COMING

OCTOBER 13TH

Audition Q&A