

UNI  
ARTS  
CORE

THEATER  
ARTS  
UNI

# COMPANY MEETING

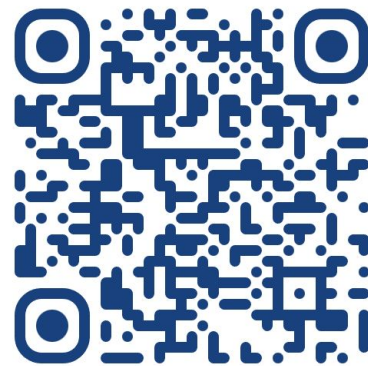
# GUYS & DOLLS



UNI THEATRE ARTS'  
**GUYS AND DOLLS**  
COMPANY MEETING

**GUYS & DOLLS COMPANY MEETING ATTENDANCE**

Thank you so much for coming to our information meeting for the parents of the Company for University High School's production of Guys & Dolls.



# TONIGHT'S AGENDA

1. WHAT TO EXPECT FROM A UNI THEATRE ARTS PRODUCTION
2. HOW TO READ THE REHEARSAL CALENDAR
3. ADVANCED THEATRE PRODUCTION
4. STUDENT REQUIREMENTS
5. PRODUCING HIGH SCHOOL THEATRE
6. PARENT VOLUNTEERS
7. COMMUNICATION



**WHAT TO EXPECT FROM A  
UNI THEATRE ARTS  
PRODUCTION**

# WHY DO WE DO THIS?

TO TEACH LIFELONG, TRANSFERABLE SKILLS THROUGH PARTICIPATION IN THEATRE ARTS.

SELF CONFIDENCE

PROBLEM SOLVING

IMAGINATION

EMOTIONAL OUTLET

AESTHETIC AWARENESS

COLLABORATION

SOCIAL AWARENESS

TIME MANAGEMENT

COMMUNICATION SKILLS

CONCENTRATION

MEMORY

SELF DISCIPLINE



# WHO IS WHO

## COMPANY STAFF

EVERYONE INVOLVED IN THE PRODUCTION

THE ADULT EXPERTS HIRED TO HELP TEACH AND MONITOR ATP'S LARGE CLASS SIZES.

RANAE BETTGER, MITCHEL SIMONCINI, ROB BLANEY, CRIS STUART, BEYLUL EPHREM, LAUREN BEE AND KIM MASON.

## CAST PIT

THE ACTORS

THE MUSICIANS IN THE ORCHESTRA

## CREW

THE BACKSTAGE PRODUCTION TEAM

- STAGE MANAGEMENT & DESIGNERS - THE STUDENT LEADERS OF THE CREW
- RUNNING CREW- THE STUDENTS WHO OPERATE EQUIPMENT AND ASSIST ACTORS THROUGHOUT THE SHOW
- MARKETING & PUBLICITY- THE STUDENT PRODUCTION TEAM WHO WILL CREATE OUR MEMORABILIA, GARNER SPONSORS, MARKET THE PRODUCTION, ASSIST THE PARENT GRAMS, AND PROGRAM AND OPERATE THE CAPTIONING SYSTEM FOR DHH
- HOUSE CREW- THE STUDENTS WHO WORK THE BOX OFFICE, USHER THE AUDIENCE AND SELL CONCESSIONS DURING THE SHOW. IN ADDITION TO WORKING THE NIGHTS OF SHOW, THESE STUDENTS ATTEND OUR LONG SATURDAY REHEARSALS TO BUILD SKILLS AND PARTICIPATE IN THE "CONSTRUCTION" OF THE SHOW.

A man in a light-colored pinstriped suit and a grey fedora hat is performing on a stage. He is in a dynamic pose, with one leg raised and his hands clasped. He has a surprised or expressive look on his face. The background is dark with blue and green stage lighting. Other people in suits and hats are visible in the background, some looking towards the performer. In the bottom right corner, a young boy in a checkered shirt is visible.

*Any Questions?*





# **HOW TO READ THE REHEARSAL CALENDAR**



# REHEARSAL NORMS

OVERVIEW, DATE, DAY, TIME, PERSONS, TASKS, LOCATION AND CONFLICTS ARE LISTED ON THE REHEARSAL CALENDAR.

**WE WILL ALWAYS START PROMPTLY AND END WHEN STATED:  
STUDENTS MAY TAKE LONGER THAN ALLOCATED TO CLEAN AT TIMES  
OR MAY HAVE QUESTIONS THAT REQUIRE STAYING LATE.**

**PLEASE COORDINATE TIMELY TRANSPORTATION AND RIDESHARE TO  
MAKE YOUR LIVES EASIER.**

**THE STAFF WILL NOT STAY MORE THAN 30 MIN PAST THE PUBLISHED  
END TIME AND STUDENT HEALTH & SAFETY IS A REAL CONCERN.**

## GUYS & DOLLS

### WEEK THREE- DANCE INVITATIONAL WEEK

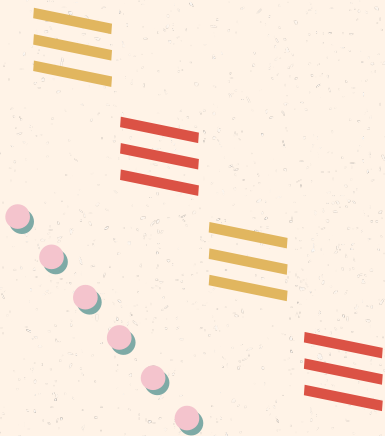
Jan 6	Monday	4:15-5:15	Havana	Sky, Sarah	Choir
		5:15-5:45	I've Never Been In Love	Sky, Sarah	Choir
		4:30-6:00	Runyonland	Choreo	Little
		6:00-7:00	Staging Page 1-46	Acting	Little
Jan 7	Tuesday	Office Hours	Guys & Dolls	Nicely, Benny	Choir
		4:00-6:00	Play Through Act 1	Pit	601
		7:00-8:30	<b>COMPANY PARENT MEETING</b>	ALL Parents	223
Jan 8	Wednesday	Office Hours	If I Were A Bell	Sarah, Sky	Choir
		4:15-7:00	Staging Page 47-87	Acting	Little
Jan 9	Thursday	Office Hours	My Time of Day	Sky	Choir
		4:00-6:00	Play Through Act 2	Pit	601
		4:15-7:00	Staging #24A-pg 129 → <i>TED Dance Invitational</i>	Acting	Little
Jan 11	Saturday	10am-4pm	Musical Rehearsal → <i>Marina arrives at 12:30</i> → <i>M3 Year Critic Training</i>	Vocal/Acting	Studio

# REHEARSAL OVERVIEW

GUYS AND DOLLS OPENING NIGHT IS FEBRUARY 28TH

★	DECEMBER	OFFICE HOURS 4PM-7PM OR SAT	ENSEMBLE VOCALS CHOREOGRAPHY
★	JANUARY	4PM-7PM OR SAT	STAGING & CHOREOGRAPHY & PIT
★	FEBRUARY	4:30-9PM	PRODUCE THE SHOW W/ CREW
★	VALENTINES	6:30-10PM	RUN WITH THE PIT

# READING THE CALENDAR



## WEEK THREE- DANCE INVITATIONAL WEEK

Jan 6	Monday	4:15-5:15	Havana	Sky, Sarah	Choir
		5:15-5:45	I've Never Been In Love	Sky, Sarah	Choir
		4:30-6:00	Runyonland	Choreo	Little
		6:00-7:00	Staging Page 1-46	Acting	Little
Jan 7	Tuesday	Office Hours	Guys & Dolls	Nicely, Benny	Choir
		4:00-6:00	Play Through Act 1	Pit	601
		7:00-8:30	<b>COMPANY PARENT MEETING</b>	ALL Parents	223
Jan 8	Wednesday	Office Hours	If I Were A Bell	Sarah, Sky	Choir
		4:15-7:00	Staging Page 47-87	Acting	Little
Jan 9	Thursday	Office Hours	My Time of Day	Sky	Choir
		4:00-6:00	Play Through Act 2	Pit	601
		4:15-7:00	Staging #24A-pg 129	Acting	Little

→ *T&D Dance Invitational*

# WEEKENDS & HOLIDAYS



## CREATIVE TEAMS

**ACTORS**

**PIT MUSICIANS**

**PROPS, SET & SCENERY**

**COSTUMES, HAIR & MAKE-UP**

**LIGHTS & SOUND**

**PROJECTION & FX**

**MARKETING & PUBLICITY**

**HOUSE CREW**

*Any Questions?*





# **ADVANCED THEATRE PRODUCTION**

# ENSEMBLE COMMITMENT

*Your Soul*

*Your Family*

*Your Academics*

*Guys & Dolls*

*Loves &  
Commitments*

## GUYS & DOLLS

### WEEK THREE- DANCE INVITATIONAL WEEK

Jan 6	Monday	4:15-5:15 5:15-5:45 4:30-6:00 6:00-7:00	Havana I've Never Been In Love Runyonland Staging Page 1-46	Sky, Sarah Sky, Sarah Choreo Acting	Choir Choir Little Little
Jan 7	Tuesday	Office Hours 4:00-6:00 7:00-8:30	Guys & Dolls Play Through Act 1 <b>COMPANY PARENT MEETING</b>	Nicely, Benny Pit ALL Parents	Choir 601 223
Jan 8	Wednesday	Office Hours 4:15-7:00	If I Were A Bell Staging Page 47-87	Sarah, Sky Acting	Choir Little
Jan 9	Thursday	Office Hours 4:00-6:00 4:15-7:00	My Time of Day Play Through Act 2 Staging #24A-pg 129 → <i>TED Dance Invitational</i>	Sky Pit Acting	Choir 601 Little
Jan 11	Saturday	10am-4pm	Musical Rehearsal → <i>Marina arrives at 12:30</i> → <i>Mid Year Critic Training</i>	Vocal/Acting	Studio

# COMPANY CONTRACT

*Scholarship or Donation*

*30 hours/10 days or fewer missed*

*Underclothes, Hair & Makeup Supplies  
Business Attire OR Tech Blacks*

*Advanced Theatre Production*

*Cappies & Macys*

## COMPANY CONTRACT

I \_\_\_\_\_ understand the terms of enrollment for 9<sup>th</sup> period Advanced Theatre Production. Once cast I agree to the following:

### General Policies

1. I have provided legible and accurate information on my audition form and understand the importance of checking my email regularly throughout the production process.
2. I understand the importance of upholding my commitment to the Theatre Department and, thus, if I **drop a show after cast**, I understand that my decision may affect my casting in future roles in University High School Theatre Department's productions.
3. I agree and will support any choices in **double casting, design teams or understudies**, as I trust the expertise of the directorial staff.
4. My parents and I will attend the **Parent & Company Meeting on Tuesday January 10<sup>th</sup> after rehearsal** to get the information that is necessary to have a successful production.
5. I will keep my GPA at or above a 2.0 at all times throughout the production process or understand that I will not be able to fully participate in the fall play. I understand I will have a poor grade in ATP as a result of suspended participation.
6. I will follow the **Trojan Code of Conduct** at all times or understand I may be removed from the Company.
7. After signing my acceptance of casting, I will handle my responsibility to the production company with a grateful attitude, hard working nature and energetic spirit.

### Fiscal Policies

8. I understand that, in accordance with ACLU Laws, there is no financial requirement for my participation in a theatrical production; however, I will donate, sell program advertisements or get a **corporate sponsor or donate \$250 prior to January 21<sup>st</sup>** to make the production possible.
9. On **February 11<sup>th</sup>**, I will begin bringing my character attire, necessary underclothes, hair supplies, make-up kit & character shoes to every rehearsal.
10. I will sell **10 Tickets by February 25<sup>th</sup>**.

### Rehearsal Etiquette & Attendance

11. I agree to miss **no more than 10 rehearsals** for the modified number Miss Bettger and Administration have assigned due to pandemic policies throughout the rehearsal process, or I will either be dropped from the show AND/OR I will accept a failing grade in ATP.
12. I will attend all rehearsals for my character, or I will communicate via email to Miss Bettger **48 hours in advance or no later than 8am** the day of.
13. I will show **professional behavior** at rehearsals: punctual, prepared and positive.
14. I will always have my pencil, water, rehearsal attire, script and score at rehearsal.
15. I will accept penalties to my grade as consequences of my actions on and off stage.

\_\_\_\_\_  
Student Signature

\_\_\_\_\_  
Approval for 9<sup>th</sup> period enrollment & contract terms

\_\_\_\_\_  
Parent Signature

\_\_\_\_\_  
Approval for 9<sup>th</sup> period enrollment & contract terms



# CLASS & GRADES

**ADVANCED THEATRE PRODUCTION**

**9TH PERIOD SEMESTER COURSE**

**VAPA CREDIT TOWARD GRADUATION**

**ONLY MEETS ON REHEARSAL DATES**

**ATTENDANCE ON AERIES**

**NO "EXCUSED" ABSENCES**

**ATTENDANCE**

**50%**

**GROWTH**

**25%**

**PROFESSIONALISM**

**25%**

# AWARDS & ADJUDICATION

UNI THEATRE ARTS PRODUCTION WILL BE ENTERED INTO THE ORANGE COUNTY CAPPIES AND THE MUSIC AND COMMENDATION FOR YOUTH AWARD PROGRAMS.

JUDGES WILL COME OUT TO THE SCHOOL TO WATCH OUR PRODUCTION. CAPPIES ARE STUDENTS AND WILL WRITE REVIEWS OF THE SHOW, WHICH STUDENTS WILL RECEIVE IN LATE MARCH. MACY IS AN ADULT ART ADVOCACY PROGRAM, AND THEY WILL MEET THE CAST, CREW & PIT AFTER THE PRODUCTION.

IN MAY WE WILL ATTEND BOTH AWARDS CEREMONIES. FOR NOW,  
SAVE THE DATES.

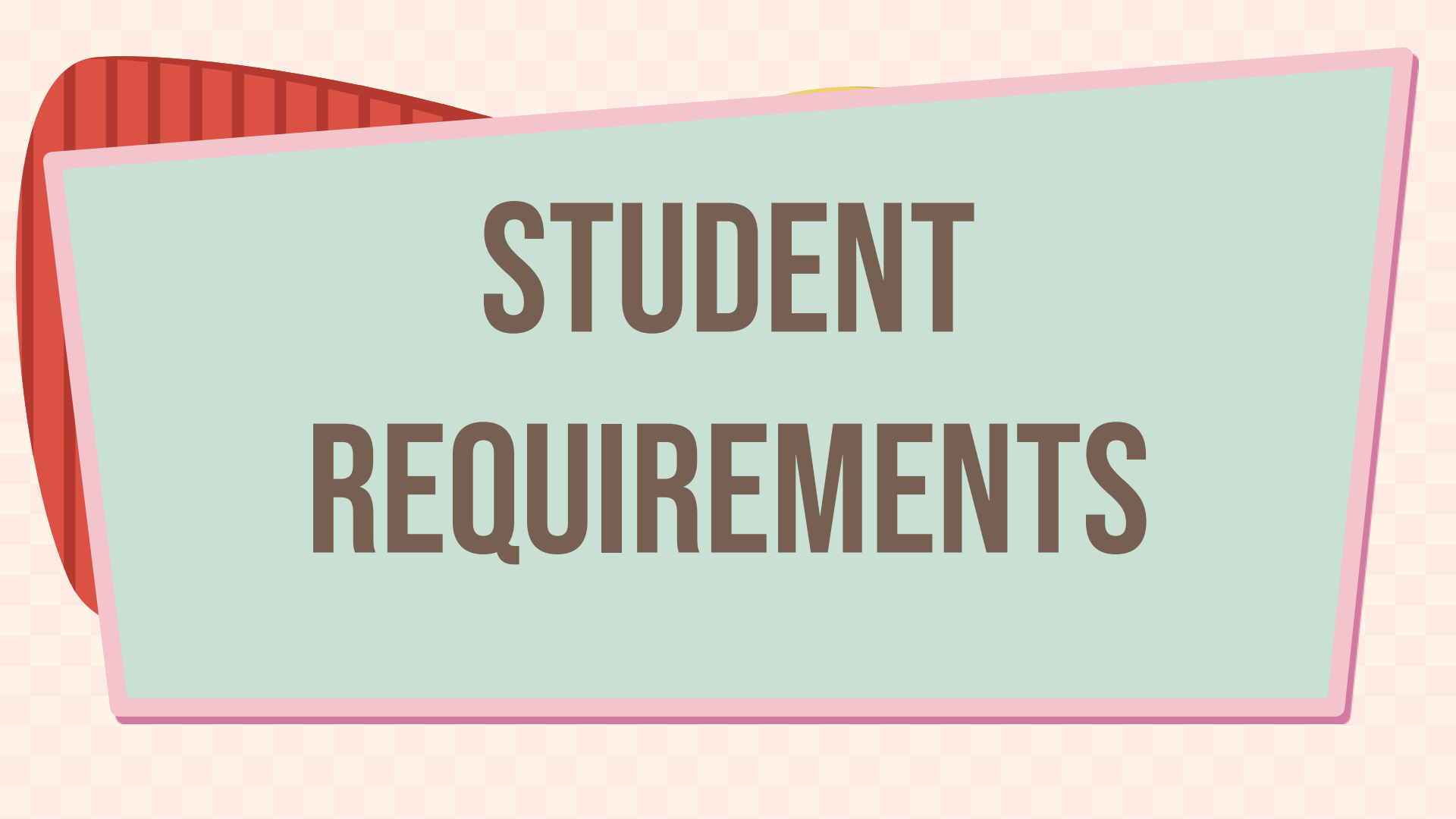
IN 2019 UNI THEATRE ARTS WON CAPPIES BEST SHOW FOR THE OLD  
MAN AND THE OLD MOON & LAST YEAR WE WON BEST CRITIC TEAM.

UNIS MUSICAL OFTEN HAS BEEN ASKED TO PERFORMED AT THE  
MACYS. WE'VE WON BEST ORCHESTRA 3 YEARS IN A ROW!!!



*Any Questions?*





# **STUDENT REQUIREMENTS**

# THE MEAL PLAN

STUDENTS NEED ENERGY AS THEY GO INTO 13 HOUR SCHOOL DAYS!

LAST FALL WE SENT OUT A POLL TO PARENTS TO BETTER GAUGE HOW TO SUPPORT YOUR FAMILY IN BETTER STUDENT HEALTH AND NUTRITION.

UNI THEATRE ARTS PROVIDES THIS SERVICE TO MINIMIZE THE IMPACT OF MEALS ON THE REHEARSAL HOURS AND TO SAVE PARENTS' NEED TO PLAN MULTIPLE SACK MEALS PER DAY.

SCHOOL ENDS BETWEEN 3:35 AND 5:30 DEPENDING ON THE STUDENT'S ATHLETIC AND ACADEMIC SCHEDULE.

WEEKDAY MEALS ARE SERVED AT 4PM SO THAT STUDENTS CAN HAVE HOT FOOD BEFORE GOING INTO REHEARSAL FOR THE EVENING AT 4:30PM.

ON WEEKEND/HOLIDAY REHEARSALS WE WILL SERVE TWO MEALS A DAY IF/WHEN STUDENTS ARE CALLED FOR EXTENDED LENGTHS OF TIME.

LOOK FOR WEEKLY EMAIL AND REMIND FOR FOOD ORDERING SHEET AND PLEASE SEND CASH BY THE DEADLINE.



## The Diviners SHOW WEEK Meal Order Form

B I U E X

Please fill out this form BY 12:00PM (noon), SATURDAY, 11/16 indicating whether or not you want to participate in the meal plan and if so, your menu choice. All meals will be served with water.

Bring CASH (1 meal = \$15) on SATURDAY 11/16 for this week's meals and give it to Miss B during rehearsal so she can hand it over to the parents helping with the Meal Plan Service.

### \*\*PLEASE NOTE\*\*

We are now in show week so every student is called. On show nights, many students do not have time to get off campus to seek nutrition but will be in rehearsals until 9:30pm.

Also, students who ordered Saturday 11/16 dinner will be credited back as that rehearsal meal was cancelled.

# PIT SUPPLIES

## REHEARSALS

PENCIL  
WATER

## ATTIRE

PERFORMANCE BLACKS  
SHOW SHIRT- OPTIONAL

## SUPPLIES

SCORE  
INSTRUMENT



# ACTOR SUPPLIES

**GRUBBIES**

**PAINT CLOTHES**

**CLOSED TOED SHOES**

**UNDERCLOTHES**

**BOXERS & UNDERSHIRT OR LEOTARD & HOSE**

**CHARACTER SHOES @ DANCE STORE**

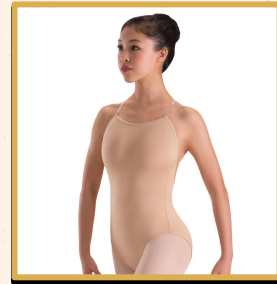
**SUPPLIES**

**MAKE-UP KIT & FALSE LASHES (LADIES)**

**FACE CLEANER & WIPES**

**COMB/BRUSH & STYLING PRODUCT**

**HAIR TIES (LADIES)**



# RUNNING CREW SUPPLIES

## GRUBBIES

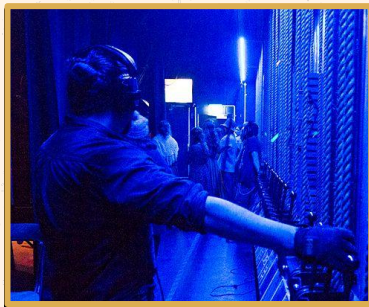
PAINT CLOTHES  
CLOSED TOED SHOES

## TECH BLACKS

SOLID BLACK SHOE OR STEEL TOED BOOT  
LONG SLEEVED BLACK SHIRT  
LONG BLACK PANTS  
BLACK SOCKS

## OPTIONAL SUPPLIES

GLOVES (FLYMEN)  
FLASHLIGHT (RUNNING CREW)  
BRUSHES (ACTOR CREW)





# HOUSE CREW SUPPLIES

## GRUBBIES

PAINT CLOTHES

CLOSED TOED SHOES

## SHOW CLOTHES

BUSINESS ATTIRE

DRESS SHOES

JACKET OR COAT

## OPTIONAL SUPPLIES

JACKET/COAT & CALCULATOR (BOX OFFICE)

FLASHLIGHT (USHERS)



*Any Questions?*



SAVE A SOUL  
MISSION

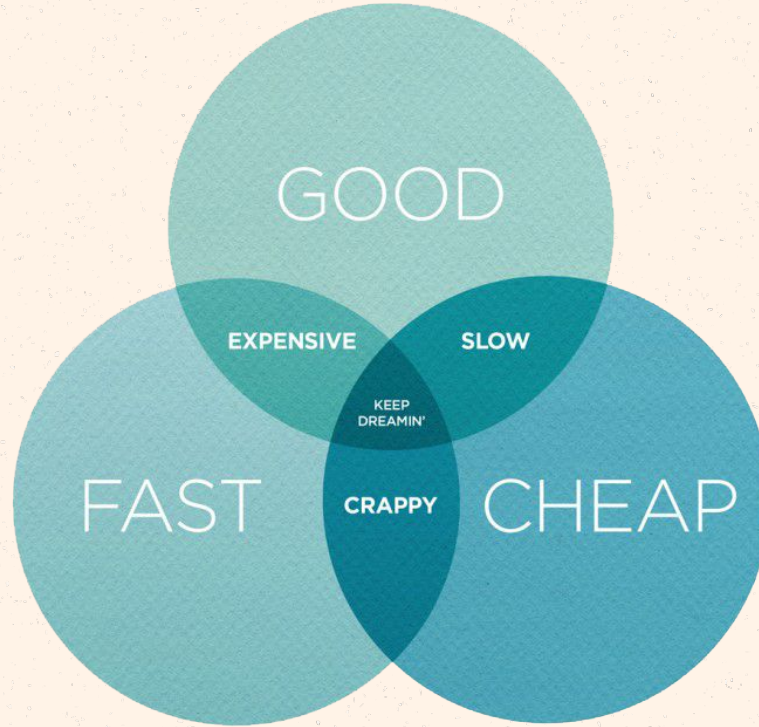
Edman's Garage





**PRODUCING  
HIGH SCHOOL  
THEATRE**

# THE MAGIC 3 OF PRODUCING



## DESIGN CONCEPTS FOR UNI'S PRODUCTION

**DIRECTOR'S VISION**

GLOWING NEW YORK CITY WAGER

**ACTOR CREW**

ECCENTRIC POSTWAR CHARACTERIZATION

**DECK CREW**

CONTRASTING NEO-NOIR INTERACTION

**TECH CREW**

LIVELY COMEDIC ROMANCE

**MARKETING & PUB CREW**

COLORFUL REALISTIC PROMOTION



# PRODUCING AT A PUBLIC HIGH SCHOOL

IN ACCORDANCE WITH ACLU GUIDELINES, A MONETARY DONATION IS NOT REQUIRED BUT WE REQUIRE STUDENTS ON SCHOLARSHIP TO HELP OFFSET THROUGH THE SALES OF PROGRAM ADVERTISEMENTS, MATERIAL DONATIONS AND/OR FAMILY MEMBER SPONSORSHIP.

THESE FUNDS GO TOWARD THE STAFF COSTS NOT COVERED BY IUSD AS WELL AS MATERIALS FOR THIS PRODUCTION:

PRODUCER  
DESIGNERS

CONDUCTOR  
CHOREOGRAPHER  
VIDEOGRAPHER

TECHNICAL DIRECTOR  
SOUND ENGINEER  
PHOTOGRAPHER

MUSIC DIRECTOR  
CONSULTANTS

# SHOW BUDGET

<b>STAFFING</b>	<b>\$12,000</b>
<b>ROYALTIES</b>	<b>\$ 7,000</b>
<b>SOUND</b>	<b>\$ 3,000</b>
<b>PROPS, SETS &amp; SCENERY</b>	<b>\$ 5,000</b>
<b>COSTUMES, HAIR &amp; MAKEUP</b>	<b>\$ 3,000</b>
<b>LIGHTS &amp; EFFECTS</b>	<b>\$ 2,000</b>
<b>TOTAL COSTS</b>	<b>\$32,000</b>

# YOUR PROMISE

*Scholarship or Donation*

*30 hours/10 days or fewer missed*

*Underclothes, Hair & Makeup Supplies  
Business Attire OR Tech Blacks*

*Advanced Theatre Production*

*Cappies & Macys*

## COMPANY CONTRACT

I \_\_\_\_\_ understand the terms of enrollment for 9<sup>th</sup> period Advanced Theatre Production. Once cast I agree to the following:

### General Policies

1. I have provided legible and accurate information on my audition form and understand the importance of checking my email regularly throughout the production process.
2. I understand the importance of upholding my commitment to the Theatre Department and, thus if I **drop a show after cast**, I understand that my decision may affect my casting in future roles in University High School Theatre Department's productions.
3. I agree and will support any choices in **double casting, design teams or understudies**, as I trust the expertise of the directorial staff.
4. My parents and I will attend the **Parent & Company Meeting on Tuesday January 10th after rehearsal** to get the information that is necessary to have a successful production.
5. I will keep my GPA at or above a 2.0 at all times throughout the production process or understand that I will not be able to fully participate in the fall play. I understand I will have a poor grade in ATP as a result of suspended participation.
6. I will follow the **Trojan Code of Conduct** at all times or understand I may be removed from the Company.
7. After signing my acceptance of casting, I will handle my responsibility to the production company with a grateful attitude, hard working nature and energetic spirit.

### Fiscal Policies

8. I understand that, in accordance with ACLU Laws, there is no financial requirement for my participation in a theatrical production; however, I will donate, sell program advertisements or get a **corporate sponsor or donate \$250 prior to January 21st** to make the production possible.
9. On **February 11th**, I will begin bringing my character attire, necessary underclothes, hair supplies, make-up kit & character shoes to every rehearsal.
10. I will sell **10 Tickets by February 25th**.

### Rehearsal Etiquette & Attendance

11. I agree to miss **no more than 10 rehearsals** (or the modified number Miss Bettger and Administration have assigned due to pandemic policies) throughout the rehearsal process, or I will either be dropped from the show AND/OR I will accept a failing grade in ATP.
12. I will attend all rehearsals for my character, or I will communicate via email to Miss Bettger **48 hours in advance or no later than 8am** the day of.
13. I will show **professional behavior** at rehearsals: punctual, prepared and positive.
14. I will always have my pencil, water, rehearsal attire, script and score at rehearsal.
15. I will accept penalties to my grade as consequences of my actions on and off stage.

\_\_\_\_\_  
Student Signature

\_\_\_\_\_  
Approval for 9<sup>th</sup> period enrollment & contract terms

\_\_\_\_\_  
Parent Signature

\_\_\_\_\_  
Approval for 9<sup>th</sup> period enrollment & contract terms



# FUNDRAISING

CURRENT ACCOUNT	\$15,000
END OF YEAR NEEDS	\$8,000
2025 STARTING COSTS	\$12,000
MUSICAL COSTS	\$32,000
TOTAL NEEDED	\$27,000
AVERAGE TICKET SALES	\$14,000
FUNDRAISING GOAL	\$13,000

87 STUDENTS

\$150 DONATION OR SCHOLARSHIP

ADDITIONALLY- AIM TO SELL 10 TICKETS

# unitheatrearts.org

ACTING PATHWAY

TECHNICAL PATHWAY

PRODUCTIONS

AWARDS

CAPPIES

UNI COMEDY SPORTZ

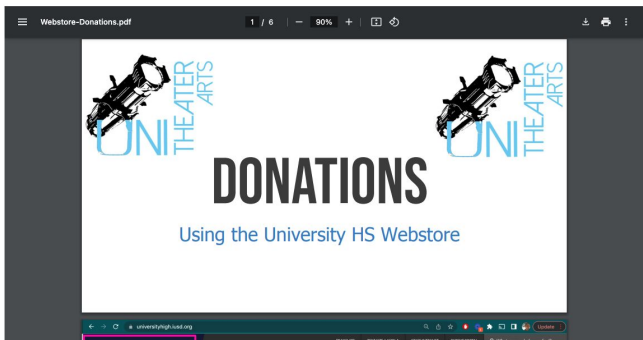
THESPIANS

LINKS & MORE...

GALLERY

**PARENT INFORMATION**

## Webstore Donations



Webstore-Donations

Download

## Advertising with Uni Theatre Arts

The University High School Theatre Arts Department is offering community groups and local businesses the opportunity to advertise their services. We will be running a slide show of advertisements on our theatre-sized movie screen before the show, during intermission, and after each of our three upcoming performances of *The Diviners*. We expect 600-1,200 patrons to watch the advertisements over the show's four day run

Parents who would like to purchase a personalized ad for their sons or daughters to celebrate work are encouraged to do so. The cast and crew are able to see this presentation and appreciate your warm words and kind thoughts.

### SIZE OF AD PRICE:

Full screen digital \$50

If you choose to take advantage of this opportunity please enclose \$50 and a JPG photo, and/or and adobe PDF emailed to [UniStageManager@gmail.com](mailto:UniStageManager@gmail.com). Checks should be made to University High School Drama Club or given directly to the student seller. If mailing, please send to: University High School c/o Ranae Bettger

AD SALES DOCUMENTS FOR STUDENTS ON SCHOLARSHIP

# TICKET SALES

[WWW.SEATYOURSELF.BIZ/IUSD](http://WWW.SEATYOURSELF.BIZ/IUSD)

TICKET WEB SITE WILL GO LIVE FOR DONATIONS AND TICKET SALES TO THE FAMILIES ON **FEBRUARY 10TH** SO THAT OUR FRIENDS AND FAMILIES GET BETTER SEATING OPTIONS.

TICKETS WILL GO ON SALE DURING SNACK, LUNCH AND OFFICE HOURS IN THE LITTLE THEATRE ON **FEBRUARY 24TH**.

TICKETS ARE ALWAYS AVAILABLE **AT THE DOOR** , 30 MIN BEFORE THE SHOW STARTS, AS LONG AS WE ARE NOT SOLD OUT.

A man in a light-colored pinstriped suit and a grey fedora hat is performing on a stage. He is in a dynamic pose, with one leg raised and his hands clasped. He has a surprised or expressive look on his face. The background is dark with blue and green stage lighting. Other people in suits and hats are visible in the background, some watching and some performing. There are stage lights visible in the background.

*Any Questions?*





**PARENT  
VOLUNTEERS**

# PARENTS ARE THE KEY

MAKING STUDENTS DREAMS A  
REALITY

BENEFITS OF VOLUNTEERING

A STUDENT RUN PROGRAM

FUNDING IN PUBLIC SCHOOLS



# PARENT VOLUNTEER SIGN-UP

THE SHOW WOULD BENEFIT GREATLY FROM...

- **MEAL PLAN VOLUNTEERS TO SERVE & PICK UP FOOD.**
- **ASSISTANCE MONITORING THE PROGRESS OF STUDENT PROJECTS ON SATURDAY BUILDS AND DURING TECH WEEK.**
- **DONATED CONCESSION ITEMS.**
- **DONATED BATTERIES.**
- **DONATED ADJUDICATION ROOM DECOR.**
- **PARENTS WORKING THE GRAM TABLE.**
- **PARENTS WORKING THE ADJUDICATION ROOMS**

# PARENT VOLUNTEERS



## MEAL SERVICE

EMILY BURKE

[ERBCA@HOTMAIL.COM](mailto:ERBCA@HOTMAIL.COM)

## SEWING & FITTINGS

KIM MASON

[KIMMASON@COX.NET](mailto:KIMMASON@COX.NET)



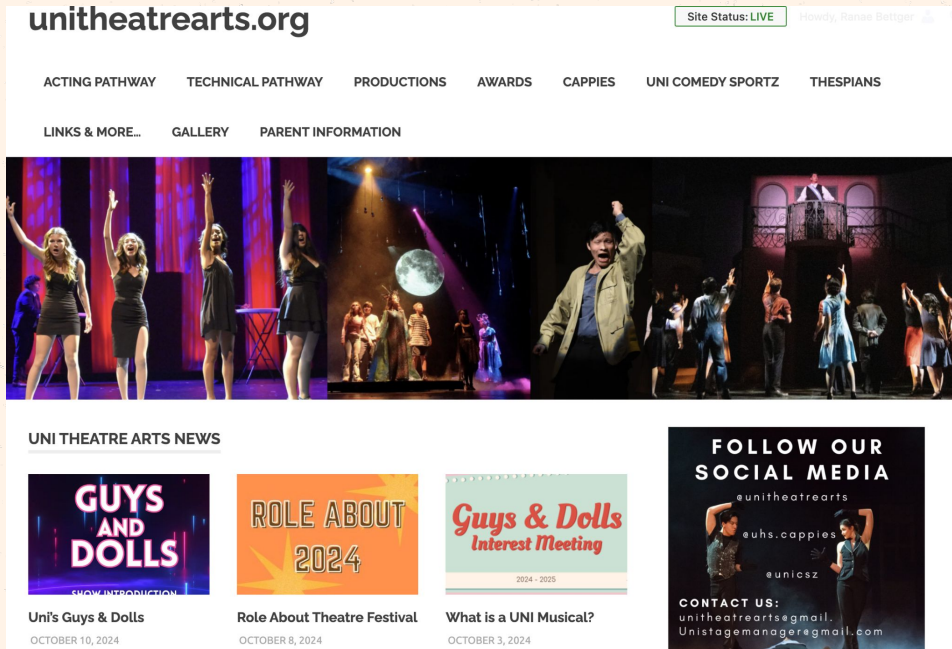
*Any Questions?*





**COMMUNICATION**

# FINDING THE RESOURCES



The screenshot shows the homepage of unitheatrearts.org. At the top left is the website name. To the right is a 'Site Status: LIVE' indicator and a user profile for 'Howdy, Renee Battiger'. Below this is a navigation menu with categories: ACTING PATHWAY, TECHNICAL PATHWAY, PRODUCTIONS, AWARDS, CAPPIES, UNI COMEDY SPORTZ, THESPIANS, LINKS & MORE..., GALLERY, and PARENT INFORMATION. A large banner image depicts a stage performance with several actors. Below the banner is a 'UNI THEATRE ARTS NEWS' section with three featured articles: 'Uni's Guys & Dolls' (dated October 10, 2024), 'Role About Theatre Festival' (dated October 8, 2024), and 'What is a UNI Musical?' (dated October 3, 2024). To the right of these articles is a 'FOLLOW OUR SOCIAL MEDIA' section listing handles for @unitheatrearts, @uhs.cappies, and @unicz, along with contact information for the student stage management team.

THE UNI THEATRE ARTS WEBSITE IS A GREAT SOURCE FOR INFORMATION ABOUT THE DEPARTMENT.

WE HAVE AN EXCELLENT NETWORK OF PARENTS WHO CAN HELP AS WELL.

FINALLY, REMEMBER YOU CAN ALWAYS REACH OUT TO THE STUDENT STAGE MANAGEMENT TEAM AS WELL.

# COMMUNICATION

I WILL COMMUNICATE WITH THE STUDENTS PRIMARILY IN ORDER TO HELP KEEP YOUR INBOXES CLEAR.

AS WE NEAR TECH WEEK, I'LL SEND A WEEKLY UPDATE.

REMIND 101 IS A TEXT APPLICATION APPROVED FOR SCHOOLS THAT ALLOWS ME TO QUICKLY NOTIFY GROUPS.

## PARENTS

TO: 81010

@utaparent

## CAST & CREW

TO: 81010

@unignd

## PIT



G&D2024

@gandd2024



# IF YOU NEED ME . . . .



I AM TERRIBLE WITH PHONE CALLS AS I TEACH IN MULTIPLE LOCATIONS ON CAMPUS.

I USUALLY ANSWER EMAIL WITHIN 3 DAYS; HOWEVER, IF YOUR EMAIL DOESN'T INCLUDE A QUESTION, I'LL READ IT BUT WILL NOT REPLY.

CLOSER TO SHOW OPENING IT IS EASIER TO COME INTO THE THEATRE AND PICK UP AND ASK ME PERSONALLY.

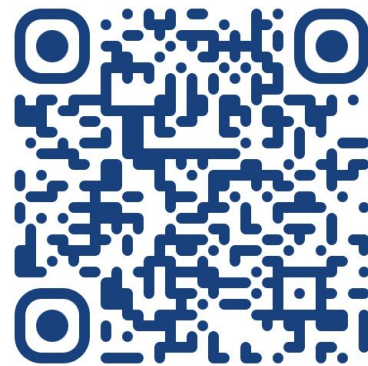
THANK YOU FOR YOUR SUPPORT!

[RANAEBETTGER@IUSD.ORG](mailto:RANAEBETTGER@IUSD.ORG)

UNI THEATRE ARTS'  
**GUYS AND DOLLS**  
COMPANY MEETING

**GUYS & DOLLS COMPANY MEETING ATTENDANCE**

Thank you so much for coming to our information meeting for the parents of the Company for University High School's production of Guys & Dolls.





***Thanks!***

Do you have any questions?

[unitheatrearts.org](http://unitheatrearts.org)